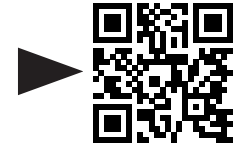




Assembly & Installation
Video Available at:
www.GenieCompany.com
or scan this code



OR

FOR QUICK
& EASY
ASSEMBLY
DOWNLOAD
THE FREE APP



CHAIN/BELT DRIVE OPENER ASSEMBLY & INSTALLATION INSTRUCTIONS

HOW TO USE THIS ASSEMBLY POSTER

This assembly poster provides all the necessary steps to complete the installation of the opener ONLY. The owners manual must be used to complete the installation and setup of this garage door opener.



Always wear safety glasses while performing this installation.



Follow each step in sequence, DO NOT skip steps. Do not move on to the next sequence until all steps in that sequence are complete.



Certain steps will require hardware. Look for the bag symbol to help identify the parts bag required for this step.



Sometimes an additional person can be helpful for certain steps. Look for the buddy symbol for steps where this may be applicable.



Certain steps will require tools to assemble the opener. Note the recommended tool symbol to help with that step.

IMPORTANT INSTALLATION INSTRUCTIONS

POTENTIAL HAZARDS

Overhead doors are large, heavy objects that move with the help of springs under high tension and electric motors. Since moving objects, springs under tension, and electric motors can cause injuries, your safety and the safety of others depends on you reading the information in this installation poster. If you have questions or do not understand the information presented, call The Genie Company (1-800-35-Genie). In this section, and those that follow, the words Danger, Warning and Caution are used to emphasize important safety information.

- DANGER** Indicates an imminently hazardous situation which, if not avoided, will result in death or serious injury.
- WARNING** Indicates a potentially hazardous situation which, if not avoided, could result in death or serious injury.
- CAUTION** Indicates a potentially hazardous situation which, if not avoided, may result in injury or property damage.

NOTE is used to indicate important steps to be followed or important considerations.

PRE-INSTALLATION CONSIDERATIONS

This opener includes parts and supplies needed for installation in most garages and on most garage doors. There are many variations of garages and garage doors. A few additional parts and supplies may be needed for installation in your garage and to your garage door. While going over these instructions, please note the additional items you may need. For help finding a local Genie® Professional Dealer, refer to the dealer locator at www.GenieCompany.com or call Customer Service at 1-800-35-GENIE.

WARNING

TO REDUCE THE RISK OF SEVERE INJURY OR DEATH
READ AND FOLLOW ALL SAFETY, INSTALLATION AND OPERATION INSTRUCTIONS. If you have any questions or do not understand an instruction, call The Genie® Company or your local Genie® Factory Authorized Dealer.

- DO NOT install opener on an improperly balanced door. An improperly balanced door could cause severe injury. Repairs and adjustments to cables, spring assembly, and other hardware must be made by a trained service person using proper tools and instructions.
- Remove all ropes and remove or disable all locks connected to the garage door before installing opener.
- Where possible, install door opener 7 feet or more above the floor. For products having an emergency release, mount the emergency release within reach, but at least 6 feet above the floor and avoiding contact with vehicles to avoid accidental release.
- DO NOT connect the opener to the source of power until instructed to do so.
- Locate the wall console button: A) Within sight of door. B) At a minimum height of 5 feet so small children cannot reach it. C) Away from all moving parts of the door.
- Install the entrapment WARNING label next to the wall button or console. Install red emergency release handle on the emergency release cord.
- The opener must reverse when the door contacts a 1-1/2 inch high object on the floor at the center of the doorway. This is about the size of a 2" x 4" board laid flat.

WARNING

A moving door could result in serious injury or death.
• DO NOT operate unless the doorway is in sight and free of obstructions. Keep people clear of opening while door is moving.
• DO NOT allow children to play with the door opener.
• DO NOT change opener control to momentary contact unless an external reversing means is installed.
• DO NOT operate a door that jams or one that has a broken spring.

WARNING

An Electrical Shock could result in serious injury or death.
• Turn off power before removing opener cover.
• When replacing cover, make sure electrical wires are not pinched or near moving parts.
• Opener must be properly grounded.

WARNING

WARNING—HIGH SPRING TENSION
• DO NOT try to remove, repair or adjust springs or anything to which door spring parts are fastened, such as wood blocks, cables, brackets, cables or other like items.
• Repairs and adjustments must be made by a trained door system technician using proper tools and instructions.

There are a few specific areas which might require extra materials:

- Measure the height of the garage door. For doors taller than 7' and up to 8' in height, you will need a Rail Extension Kit for the door to fully open.
- Not all Genie Chain/Belt operators will work with one-piece doors. For help, contact us at 1-800-354-3643 or visit our website chat at www.geniecompany.com.
- See section 2 - The header above the garage door where torsion springs are used—does it extend far enough above the spring(s) to allow mounting of the header bracket? If not, or if you can't tell—you will probably need a piece of 2" x 6" lumber to span across wall studs.

AVERTISSEMENT

POUR RÉDUIRE LES RISQUES DE BLESSURES GRAVES VOIRE MORTELLES
LIRE ET SUIVRE ATTENTIVEMENT TOUTES LES INSTRUCTIONS D'INSTALLATION ET DE FONCTIONNEMENT AINSI QUE TOUTES LES CONSIGNES DE SÉCURITÉ. Si vous avez des questions ou si vous ne comprenez pas une instruction, veuillez contacter directement The Genie Company.

- NE PAS installer l'opérateur sur une porte mal équilibrée. Celle-ci pourrait entraîner de graves blessures. Les réparations et les réglages des câbles, ensembles de ressort ou tout autre article de quincaillerie doivent être effectués par un professionnel qui se sert d'outils appropriés et qui respecte les instructions.
- Enlever toutes les cordes et désactiver toutes les verrous de la porte avant d'installer l'opérateur.
- Dans la mesure du possible, installer l'ouvre-porte à 2,1 m ou plus au-dessus du sol. Pour les produits dotés d'un cordon de déclenchement d'urgence, installer le déclenchement d'urgence mais au moins à 1,8 m au-dessus du sol en évitant tout contact avec les véhicules pour éviter qu'ils ne soient déclenchés accidentellement. NE PAS utiliser d'urgence cordon de libération pour ouvrir ou fermer la porte.
- NE PAS connecter l'opérateur à la source d'alimentation tant que l'instruction n'est pas donnée.
- Repérer la console murale: A) En vue de la porte. B) À une hauteur minimale de 1,5 m afin que les jeunes enfants ne puissent pas l'atteindre. C) Loin de toutes pièces mobiles de la porte du garage.
- Placer l'étiquette d'avertissement en cas de coincement à proximité du bouton mural ou de la console de manière à ce qu'elle soit bien en évidence. Installer la poignée du cordon de déclenchement d'urgence.
- L'opérateur doit s'inverser lorsque la porte entre en contact avec un objet d'une hauteur de 3,8 cm placé sur le sol, au centre de l'ouverture de la porte. Ceci équivaut environ à une planche de 5 x 10 cm posée à plat sur le sol.

AVERTISSEMENT

Porte en mouvement pourrait entraîner des blessures graves voire la mort
• Utiliser uniquement la porte et en vue et être libre de tout obstacle. Ne laisser personne s'écarter dans l'ouverture de la porte pendant qu'elle est en mouvement.
• Ne pas permettre aux enfants de jouer avec l'opérateur de la porte.
• Ne pas modifier la commande de l'opérateur à contact momentané à moins qu'un moyen d'inversion externe soit installé.
• Ne pas faire fonctionner une porte qui bloque ou dont le ressort est cassé.

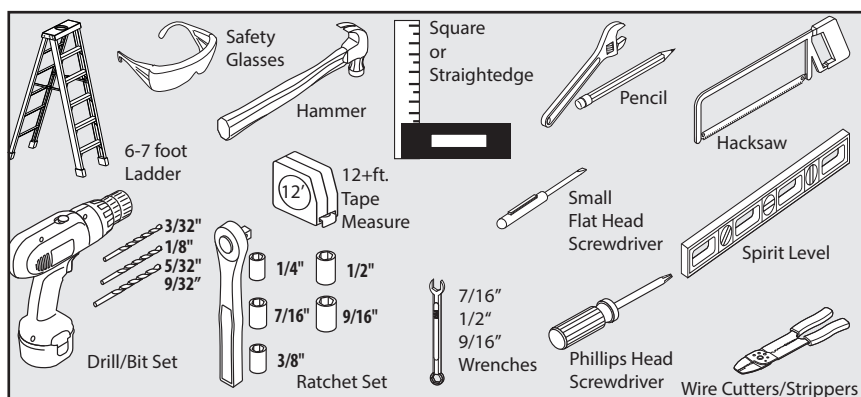
AVERTISSEMENT

Choc électrique pourrait entraîner des blessures graves voire la mort
• Couper le courant avant d'enlever le couvercle de l'opérateur.
• Lorsque le couvercle doit être remplacé, s'assurer que les fils ne sont ni coincés ni près des pièces mobiles.
• L'opérateur doit être correctement mis à la terre.

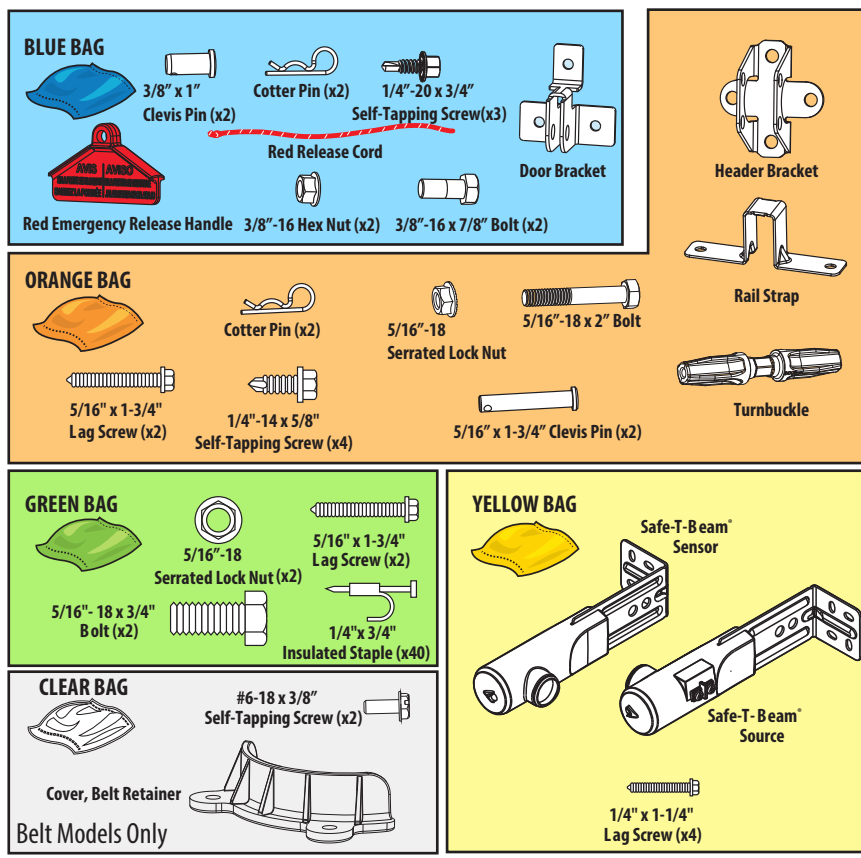
AVERTISSEMENT

TENSION ÉLÉVER RESSORT POURRAIT ENTRAÎNER DES BLESSURES GRAVES VOIRE LA MORT
• Ne pas essayer d'enlever, régler ni ajuster les ressorts ou toute autre pièce à laquelle le ressort de la porte est attaché, y compris blocs de bois, supports en acier, câbles ou autres articles semblables.
• Les réparations et les réglages doivent être effectués par techniciens qualifiés qui se servent d'outils appropriés et qui respectent les instructions.

RECOMMENDED TOOLS



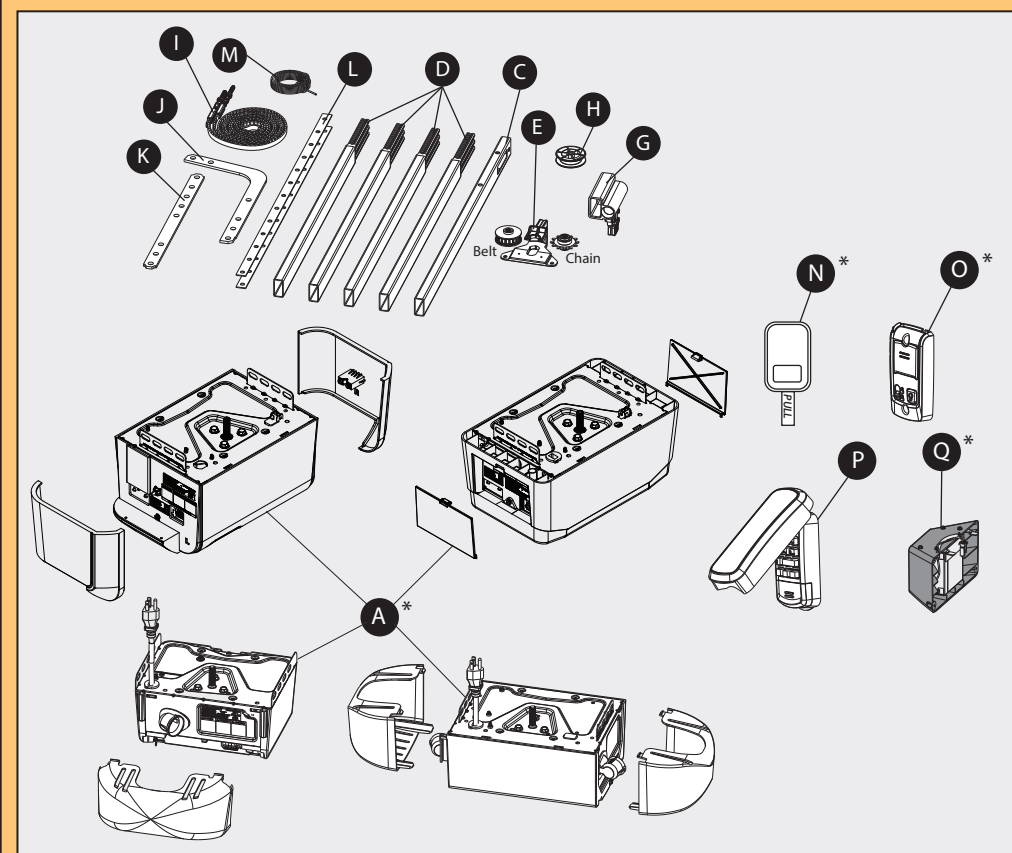
HARDWARE BAGS



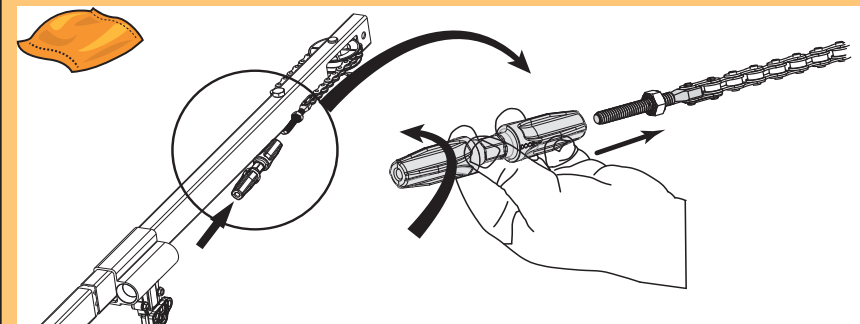
1 ASSEMBLE THE OPENER

Orange Parts Bag

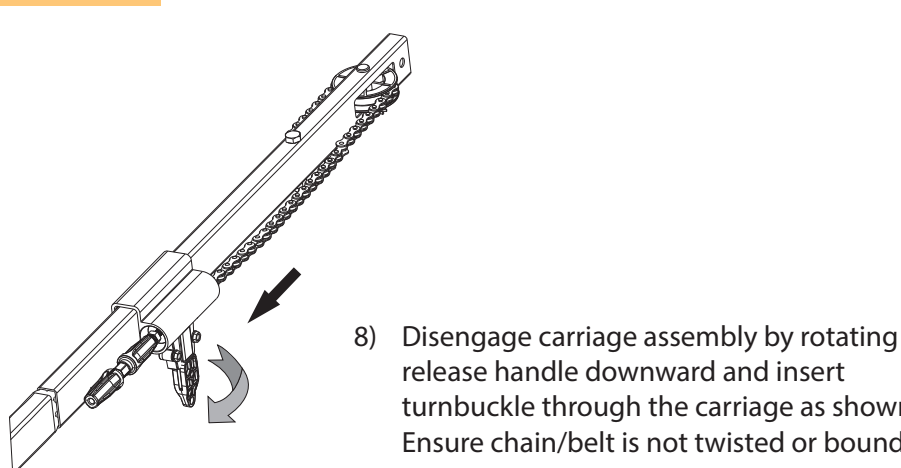
TOOLS: (2) - 7/16" or Adjustable Wrenches, 1/2" Wrench or Socket/Ratchet, 1/4" Socket/Ratchet.



- PARTS LIST**
- A = Powerhead & Lens*
 - C = Header Rail Section
 - D = Rail Sections (x4)
 - E = Sprocket Support Assembly
 - G = Carriage Assembly
 - H = Idler Pulley
 - I = Chain or Belt Assembly
 - J = Curved Door Arm
 - K = Straight Door Arm
 - L = Mounting Straps (x2)
 - M = 90ft. Wire Spool
 - N = Remote*
 - O = Wall Console*
 - P = Wireless Keypad (Select Models Only)
 - Q = Battery Backup* (Select Models Only)
 - * Blue Parts Bag
 - * Yellow Parts Bag
 - * Orange Parts Bag
 - * Green Parts Bag
 - * Clear Bag (Belt Models Only)
 - * Shapes/quantities of powerheads, lenses, remotes, and consoles will vary across models.

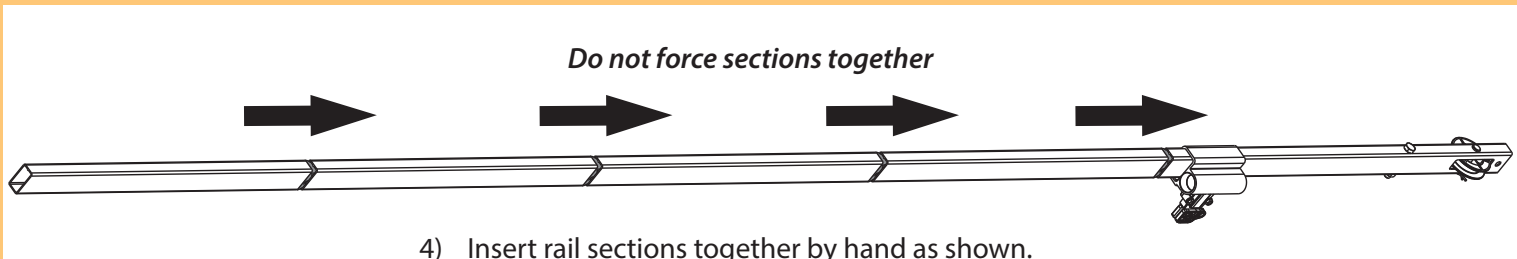


- 7) Install the turnbuckle with "door" end arrow onto the gold threaded end by rotating counter-clockwise one full turn. **NOTE:** Make sure the turnbuckle and the "gold" and "silver" screws are on the right hand side when standing underneath the power head, facing the door.

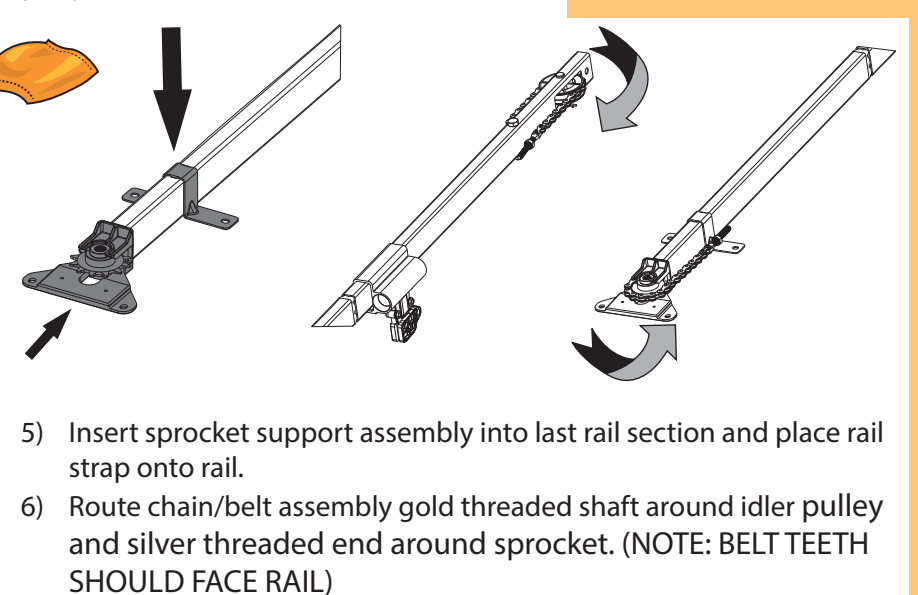


- 8) Disengage carriage assembly by rotating release handle downward and insert turnbuckle through the carriage as shown. Ensure chain/belt is not twisted or bound.

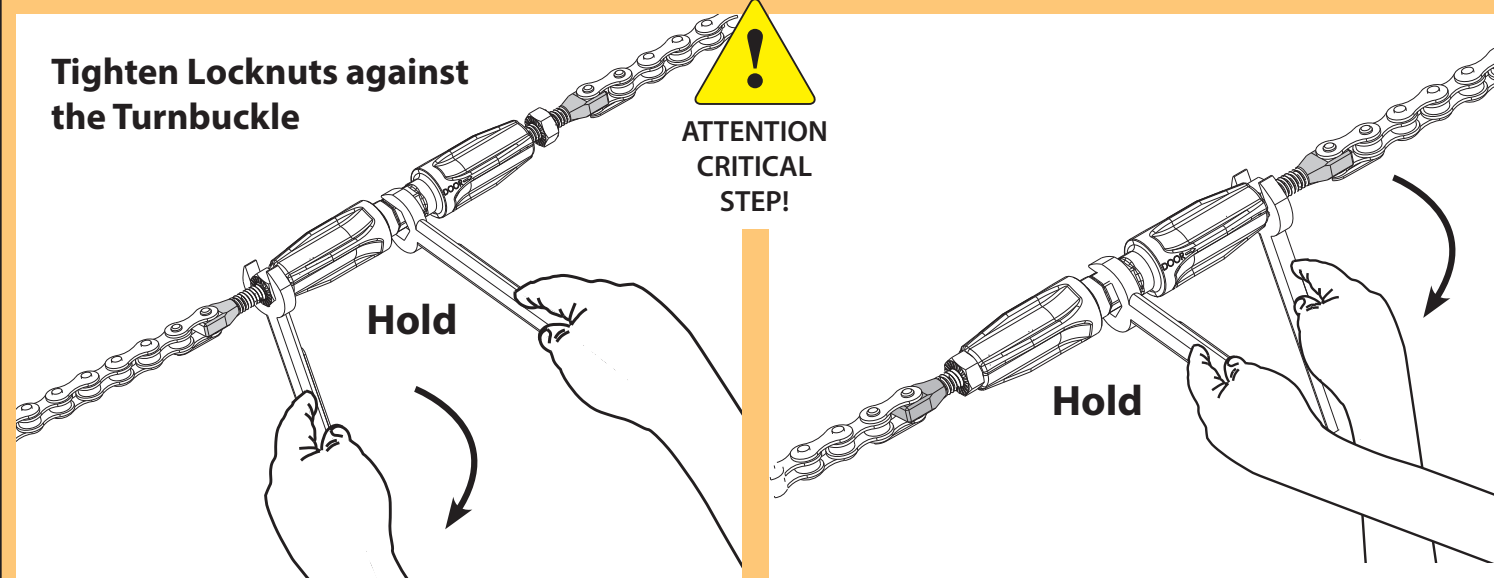
FOR USE ON SECTIONAL DOORS ONLY



- 4) Insert rail sections together by hand as shown.
- 1) Align pulley in rail slot and insert clevis pin through header rail hole and idler pulley. Secure with cotter pin.
- 2) Insert 5/16"-18 x 2" bolt into header rail and secure with nut.
- 3) Slide carriage assembly onto header rail section. Note "door" arrow will point towards idler pulley.

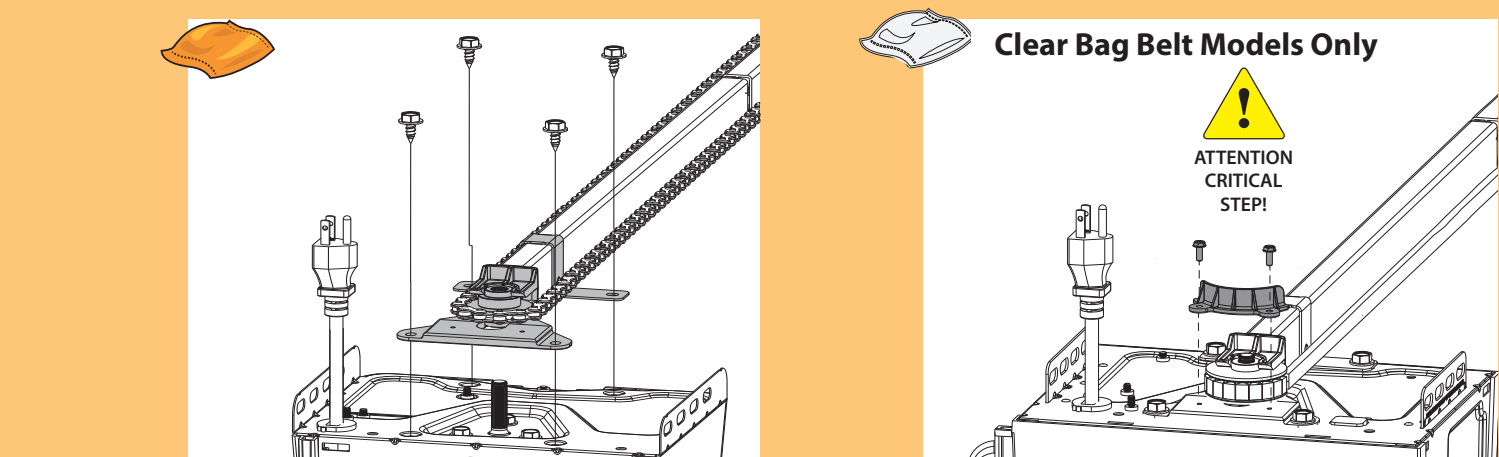


- 5) Insert sprocket support assembly into last rail section and place rail strap onto rail.
- 6) Route chain/belt assembly gold threaded shaft around idler pulley and silver threaded end around sprocket. (NOTE: BELT TEETH SHOULD FACE RAIL)
- TIP! : To minimize chain/belt twist, hold threaded shafts with hands and rotate turnbuckle with thumbs.
- 10) Hold chain/belt and rotate turnbuckle with thumbs counter-clockwise until chain/belt is tensioned properly. Measure chain/belt tension on opposite side of rail until 1/4" from bottom of rail.



- 11) Once proper chain tension has been established, hold turnbuckle in place with a 7/16" or adjustable wrench. Tighten both tension nuts with a 7/16" wrench.

ASSEMBLE THE RAIL TO THE POWERHEAD:

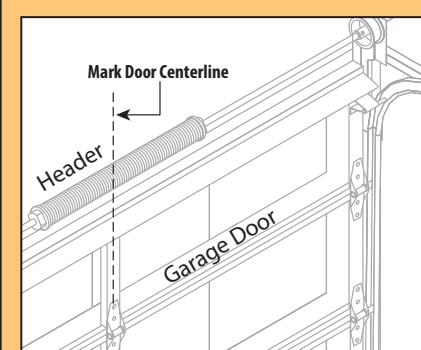


- 1) Lower the drive sprocket over the spline shaft on top of the powerhead. Align rail strap and sprocket support with holes in powerhead. **NOTE:** Make sure the "+" arrow is facing away from the door, and the "-" arrow is facing towards the door.
- 2) Fully tighten 1/4"-14 x 5/8" self tapping screws. Do not over-tighten.
- 3) Install belt retainer using #6 x 3/8" self tapping screws. (Clear parts bag, Belt models only).

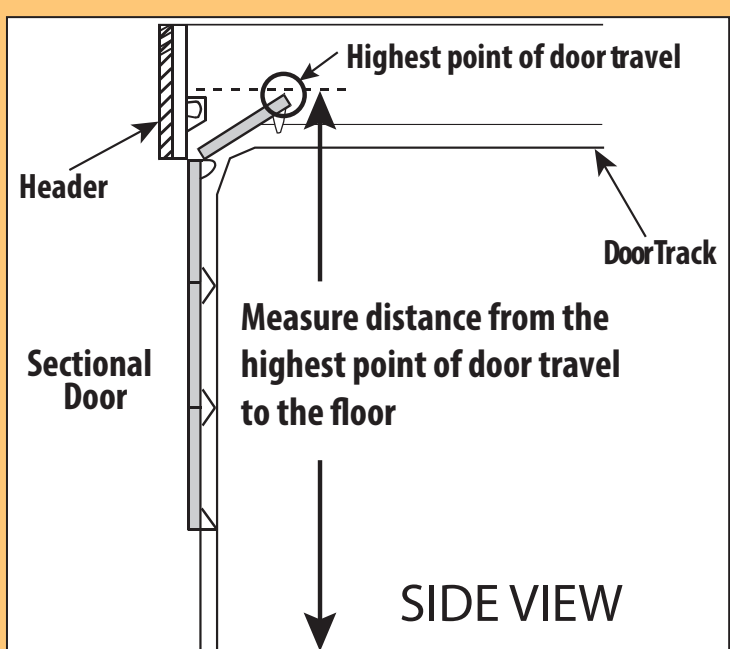
2 INSTALL HEADER BRACKET AND OPENER TO WALL

Orange Parts Bag

TOOLS: Tape Measure, Ruler/Square, Ladder(s), Pencil, 5/32" Drill, 7/16" Socket/Ratchet.

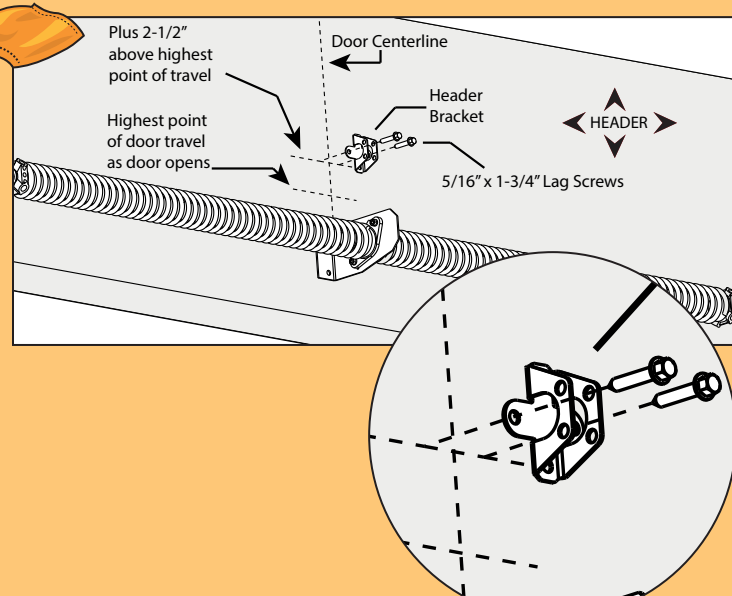


Measure the width of the door to determine the center. Place a mark on the top of the door and the header above the door to indicate the **DOOR CENTERLINE**.



Determine "highest point of door travel":

- Get on a ladder to the side of the garage door.
- Have someone lift the door open slowly.
- As the door is raised, find the highest point where the door extends above the door tracks—that is the highest point of door travel. This is typically where the top door roller exits the curved portion of the door track onto the horizontal section as the door is raised.
- With a tape measure, determine the distance from the highest point of door travel to the floor.

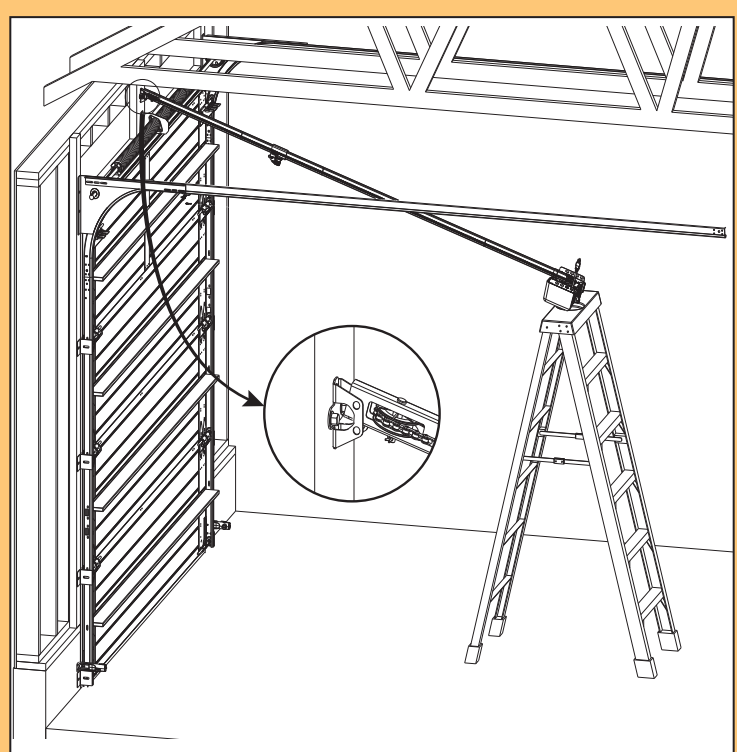


- Place a mark on the garage header at the highest point of door travel at the **DOOR CENTERLINE**.
- Add 2-1/2 inches and mark above the highest point mark.
- Position the header bracket on this mark so that the mounting holes intersect with this line.
- Drill 5/32" pilot holes in header.
- Secure header bracket with 5/16" x 1-3/4" lag screws.

NOTE: If door spring rest where door bracket should be mounted using the instructions above, move door bracket just above door spring.

WARNING
Door springs are under high tension. If spring or shaft is in the way, measure above spring or shaft on the garage door centerline and mark as location for header bracket. **DO NOT ATTEMPT TO MOVE, ADJUST, OR REMOVE DOOR SPRING!**

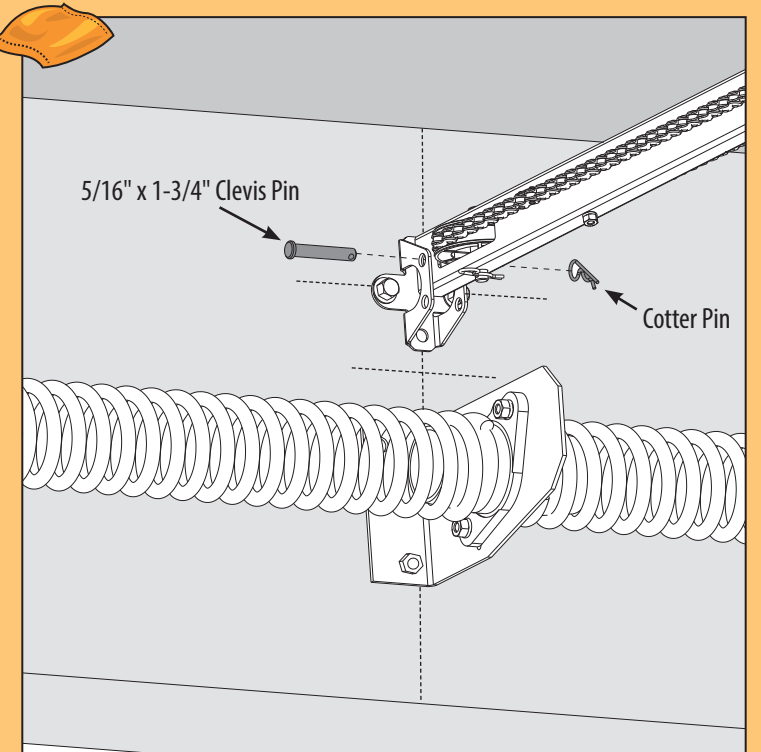
CAUTION
Header Bracket must be fastened to garage framing. **DO NOT** fasten to drywall, particle board, plaster, or other such materials.



- Raise opener assembly and position opener rail section inside bracket (inset).
- Support powerhead on a ladder or other suitable item and/or have a second person assist during this step.
- Align holes in rail with upper holes in bracket (inset).

AVERTISSEMENT
Les ressorts de la porte sont soumis à une haute tension. Si le ressort ou l'arbre se trouve dans le passage, mesurez au-dessus du ressort ou de l'arbre sur la ligne centrale de la porte de garage et marquez ce repère comme emplacement pour le support de l'entrouverture. **NE PAS DÉPLACER, RÉGLER NI DÉMONTÉ LE RESSORT DE LA PORTE !**

CAUTION
Le support de l'entrouverture doit être monté sur la charpente du garage. **NE PAS** fixer au plâtrier, aggloméré, plâtre ou autres matériaux de ce type.



- Slide clevis pin through holes in rail and bracket and secure with cotter pin.
- Slide carriage near the powerhead now to prevent damage to the door for the next step.

3

MOUNTING OPENER TO CEILING



Green Parts Bag



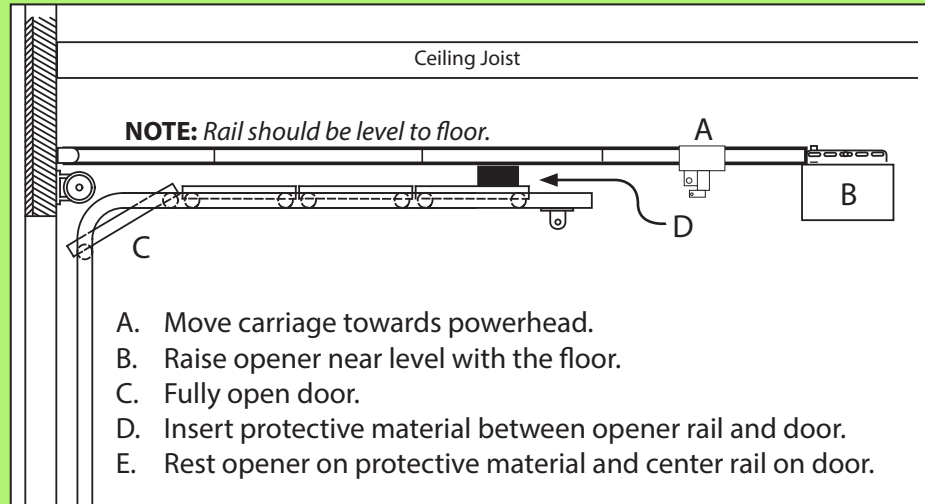
TOOLS: Tape Measure, Level, Ruler/Square, Ladder, Pencil, 5/32" Drill, 7/16" & 1/2" Socket/Ratchet, Hacksaw.

There are several methods to mount the powerhead to the ceiling. The most popular methods are shown here. Use the method, or combination of methods, that best suit the mounting requirements for your garage.

Attach to garage framework only. DO NOT attach to drywall or particle board.

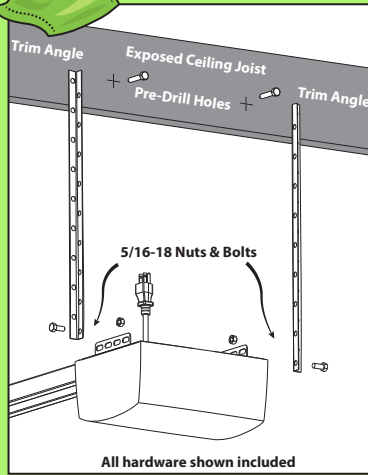
This opener includes 2 - 28in long perforated angle straps, 2- lag screws, and 2- nuts and bolts. Additional hardware may be required depending on the installation requirements.

RAISE AND CENTER OPENER TO DOOR



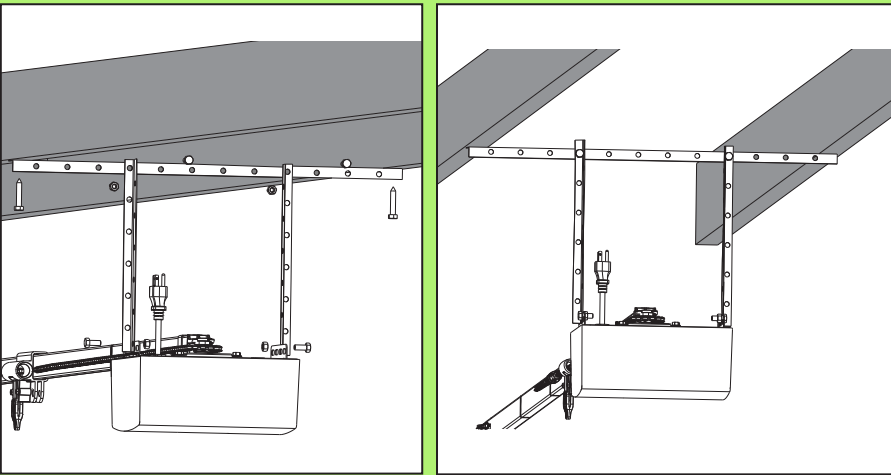
Lift and support powerhead while a second person fully opens the door. Insert a 2 x 4 board, cardboard or towel between door and rail to protect door. Position opener over the DOOR CENTERLINE and allow it to rest on protective material.

PARALLEL JOIST



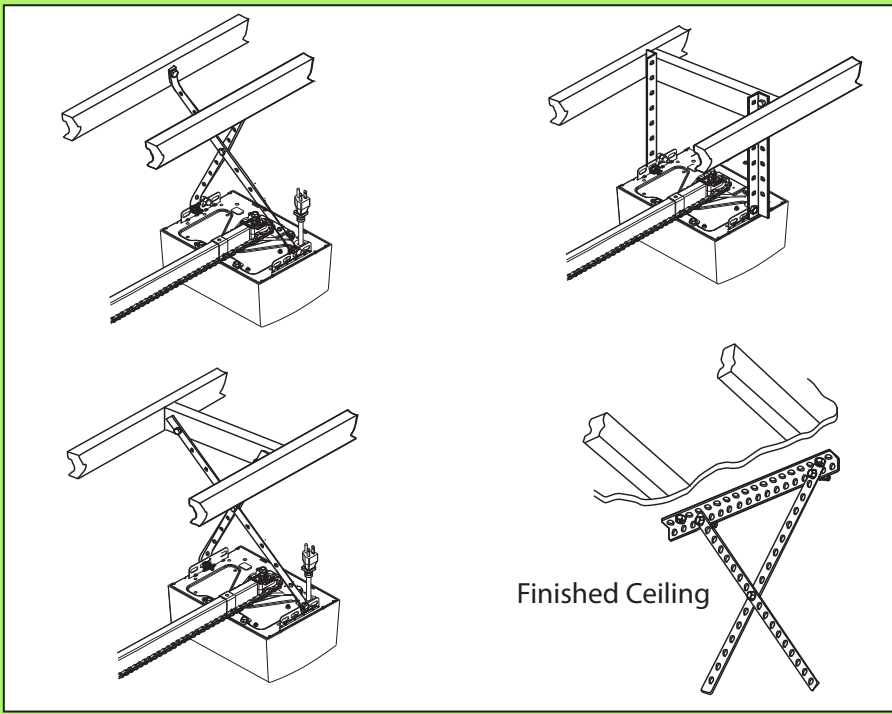
Method A-For open ceilings with exposed joist, drill 5/32" pilot holes and secure included mounting straps to joist using 5/16" x 1-3/4" lag screws. Raise powerhead unit so that there is sufficient clearance between door and rail. Cut and/or bend mounting straps as needed to align with the powerhead and to level the rail. Secure powerhead to mounting straps using 5/16"-18 x 3/4" bolts and nuts. Ensure powerhead is centered with the door and remove the 2 x 4 board and/or other protective material and close the garage door.

PERPENDICULAR JOIST



Method B-For finished or unfinished ceilings, attach perforated angle iron (not supplied) to joists using 5/16" x 1-3/4" lag screws and secure mounting straps to the perforated angle with 5/16"-18 bolts and nuts (not supplied). Raise powerhead so that there is sufficient clearance between door and rail. Cut and/or bend mounting straps as needed to align with the powerhead and to level the rail. Secure powerhead to mounting straps using 5/16"-18 x 3/4" bolts and nuts. Ensure powerhead is centered with the door and remove the 2 x 4 board and/or other protective material and close the garage door.

ALTERNATE MOUNTING TYPES



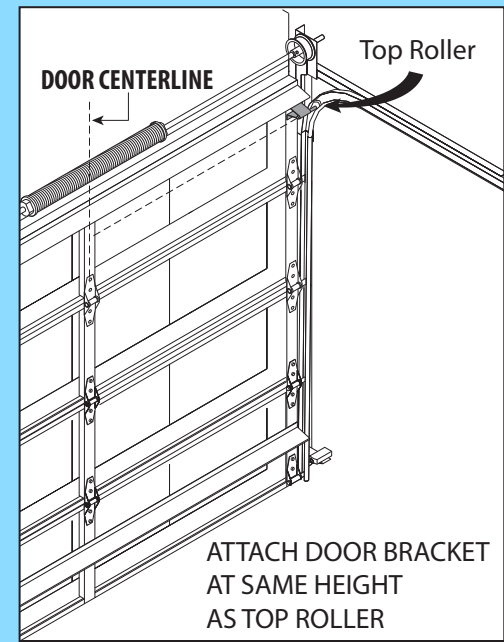
ADDITIONAL HARDWARE MAY BE REQUIRED

4 ATTACHING OPENER TO DOOR

Blue Parts Bag



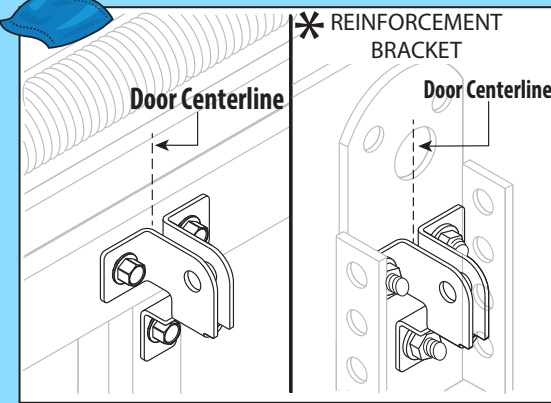
TOOLS: Tape Measure, Level, Ruler/Square, Ladder, Pencil, 1/8" or 9/32" Drill, 7/16" & 9/16" Socket/Ratchet.



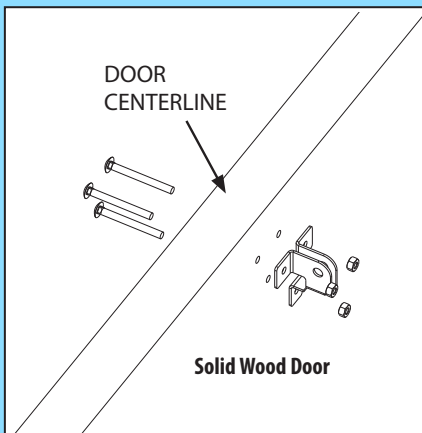
Sectional Door (Metal Door):

- Center bracket on door and align near the same height as top rollers.
- Using bracket as a guide, mark holes on door.
- Drill 1/8" pilot holes partially through the door.
- Secure with 1/4" - 20 x 3/4" self-tapping screws.

Some garage door manufacturers provide door brackets that CAN be used with your Genie Door Arms.



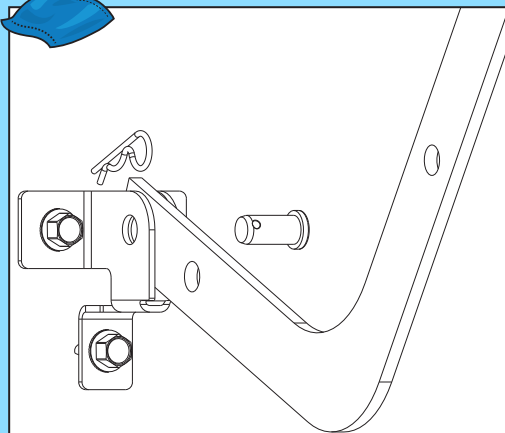
* In some cases, a garage door opener reinforcement bracket should be used. Check the recommendations from the door manufacturer. Attach door bracket to reinforcement bracket.



Sectional Door (Wooden Door):

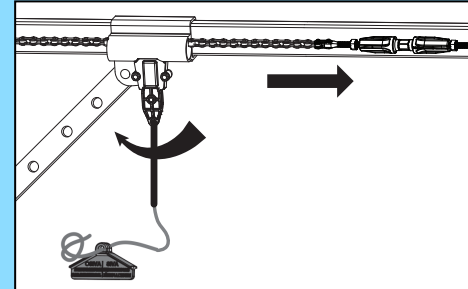
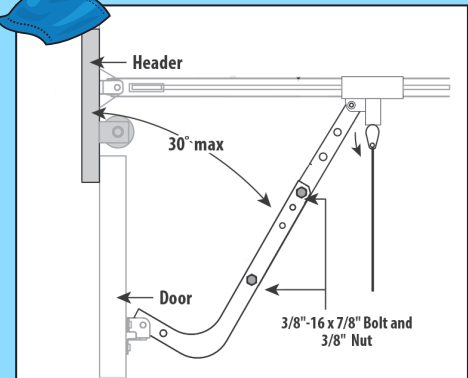
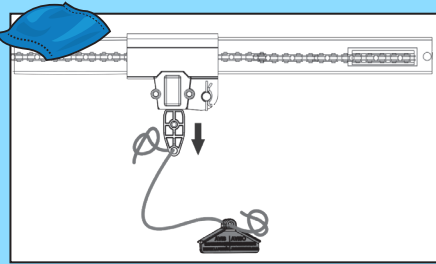
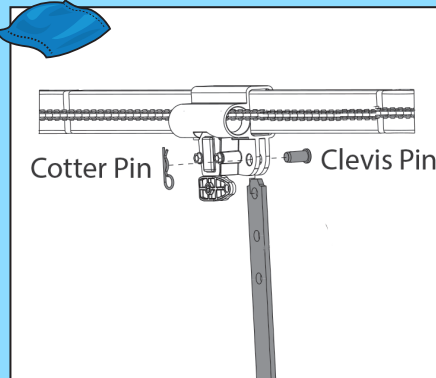
- Center bracket on door. Attach near the same height as top rollers.
- Using bracket, mark holes on door.
- Drill 9/32" holes completely through the door.
- Fasten bracket with 1/4" x 3/4" carriage bolts and nuts (not provided).

*Measure thickness of door and add 1/2 inch to purchase correct length of carriage bolts. Stainless Steel bolts are recommended to prevent staining of the door.



- Attach the curved door arm to the door bracket with 3/8" x 1" clevis pin and hair pin.
- Attach the straight door arm with 3/8" x 1" clevis pin and hair pin.
- Attach the emergency release cord to the carriage release arm. Tie a simple overhand knot to secure.
- Position emergency release handle to be approximately 6 feet from floor*. Attach with a simple overhand knot. Cut off excess.

* If the emergency release handle interferes with vehicle roof rack, sunroof or other object that may interfere with the proper and safe operation of the release mechanism, move release handle further upwards. NOTE: Emergency release handle MUST be placed where home occupant(s) can reach.

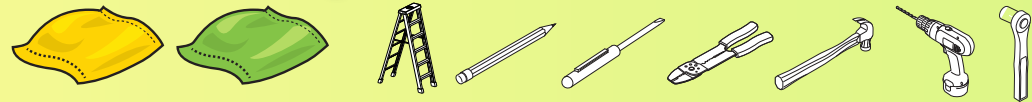


- Slide the carriage to about 16 inches from the door.
- Position carriage and door arms to form an angle of approximately 20 to 30 degrees.
- Attach the curved and straight door arms together using 3/8"-16 x 7/8" bolts and nuts. Space the fasteners as far apart as possible.
- Re-engage the carriage assembly by rotating release handle to put the level in the up position (towards door), then manually lift the garage door until the carriage locks over the Turnbuckle.

NOTE: Overall length of both arms should be minimized, but not so short that the straight arm is vertical or too long that it exceeds 30° from the header.

5 WIRING THE OPENER (Safe-T-Beam® & Wall Console)

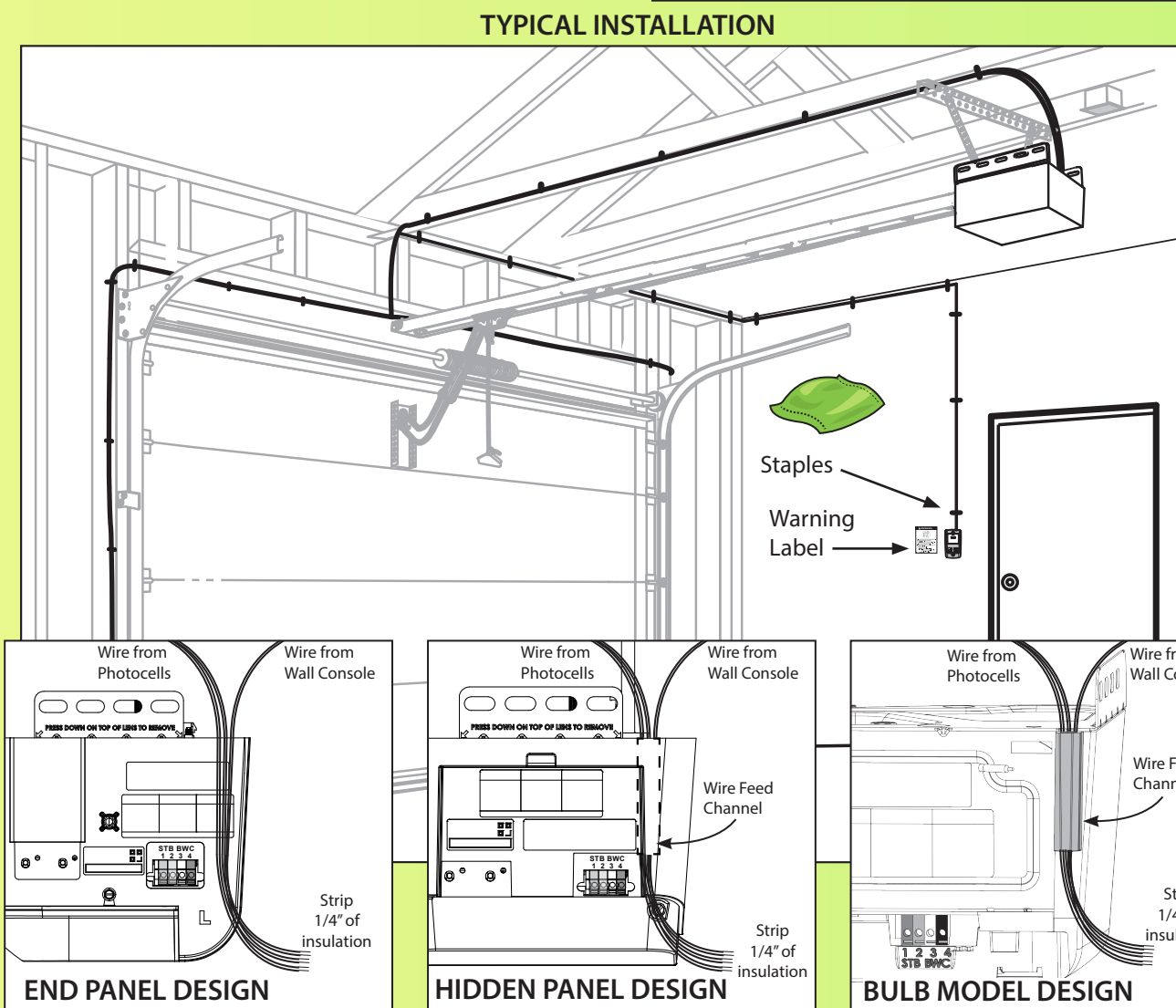
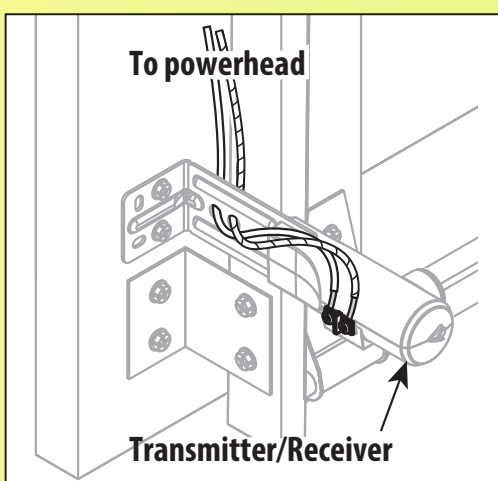
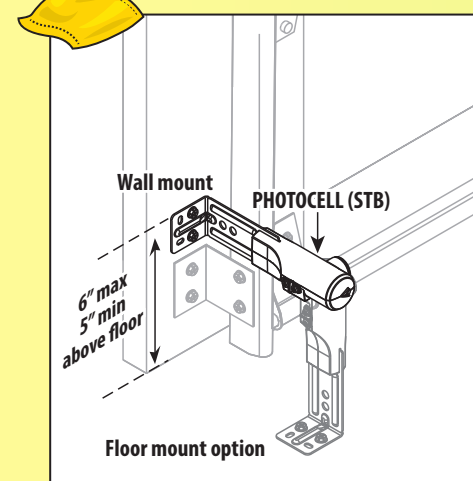
Yellow Parts Bag Green Parts Bag



TOOLS: Ladder, Pencil, Small Common Screwdriver, Wire Strippers/Wire Cutters, Hammer, 3/32" Drill, 1/4" Socket/Ratchet

NOTICE: All low voltage wiring must be CL2 or equivalent rated Safe-T-Beams®

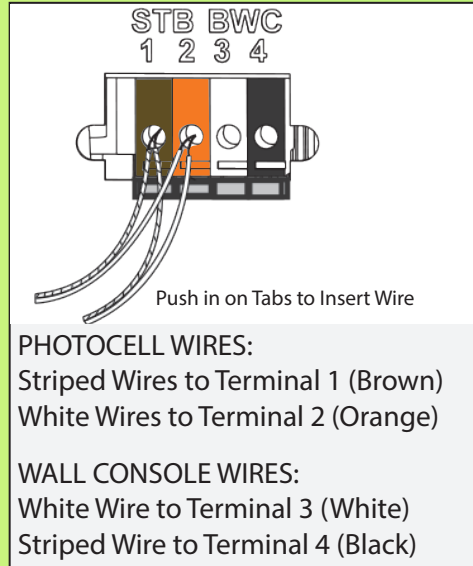
- Position Safe-T-Beam® (STB) Transmitter and Receiver on each side of garage door 5"- 6" above floor. Face the lenses towards each other.
- Mark bracket mounting holes; drill 3/32" pilot holes and secure with (4) 1/4" x 1-1/4" lag screws (provided) into wood. If mounting into concrete or block, other fasteners are required and are available at leading retail stores.
- Use garage pre-wiring if available. Otherwise, route 2 lengths of supplied wire from powerhead, along the ceiling, across the header and down both sides of the door, to each sensor. Secure the wire to the ceiling and walls using the insulated staples (green bag).
- On the powerhead: insert both wires down through the control wire channel. Remove 1/4" insulation from both sets of white and striped wire. Twist two white wires together. Using a small flat head screwdriver, press in the orange tab at terminal 1 and insert the wires. Twist the two striped wires together and insert into terminal 2. Ensure the wires are in their terminal, adjust as necessary.
- At each sensor, remove 1/4" insulation from the white and striped wires and secure in each terminal. Ensure the wires are secure at each terminal; adjust as necessary.



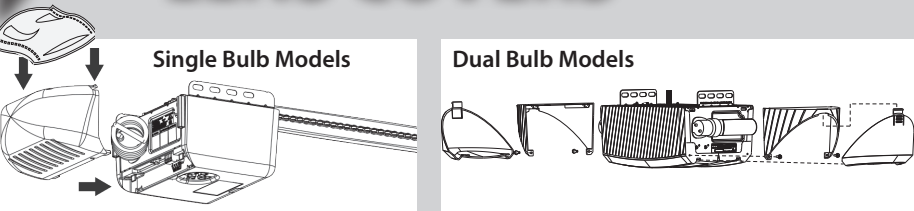
Wall Console

NOTE: Skip these steps if your model included the Wireless Wall Console. See owners manual for more instruction.

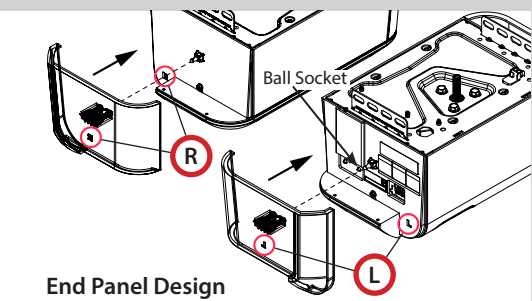
- Use garage pre-wiring if available. Otherwise, route supplied wire from powerhead to the desired location for the wall control. Secure wire with insulated staples (green bag).
- On the powerhead: insert wire down through the control wire channel. Remove 1/4" insulation from white and striped wire. Using a small flat head screwdriver, press in the orange tab and insert the white wire in terminal 3 and the striped wire in terminal 4. Ensure the wires are secure in each terminal; adjust as necessary.
- At the wall console end of the wire, remove 1/4" insulation from the white and striped wires and secure the white wire to the "W" (-) terminal and the striped wire to the "B/W" (+) terminal as shown. Ensure the wires are secure at each terminal; adjust as necessary.
- Mark the wall console mounting holes, drill 3/32" pilot holes and mount with #6 x 1-1/4" screws. If mounting to drywall, anchors will be required (not provided).
- Post the "ENTRAPMENT WARNING LABEL" (Included in the Operation and Maintenance Manual) next to the wall console. (Use alternate label for Wi-Fi model openers, see owners manual)



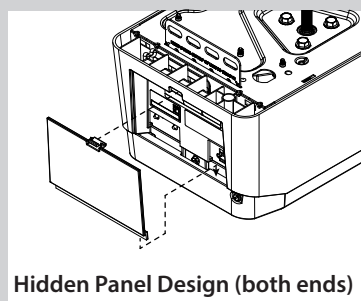
6 SECURE PANELS & LENS COVERS



- Install light bulbs if applicable.
- Install Light Cover Panels using two screws each. (Clear Bag)
- Install Len Covers in Panels snapping into place.



- Orient the right and left panels, matching up the L and R labels in the mold in the end of the unit, and in the panels.
- Line up the ball socket with the receptacle in the panel, and snap the panel firmly into place.



- Align the covers to the openings. Insert the bottom of the cover into the recess in the end of the unit.
- Snap the covers into place with the latch.

BASIC INSTALLATION IS COMPLETE. OPENER IS NOW READY TO PROGRAM. BASIC PROGRAMMING IS INCLUDED HERE IN STEP 8. SEE PROGRAMMING, OPERATION AND MAINTENANCE MANUAL TO PROGRAM ALL OTHER ACCESSORIES INCLUDING ALADDIN CONNECT®

7 POWER THE OPENER

WARNING

Opener is equipped with grounded electrical plug for your protection, and only fits grounded electrical outlets. DO NOT alter plug in any way! If you have no grounded outlets, have one installed by a licensed electrician. Opener must be properly grounded to prevent personal injury and equipment damage. NEVER USE AN EXTENSION CORD! Check local building codes for any requirement that you must have a permanent hard-wired connection.

AVERTISSEMENT

L'opérateur, qui est équipé d'une prise électrique mise à la terre pour votre protection est compatible uniquement avec des prises électriques mises à la terre. NE PAS modifier la fiche d'une quelconque manière. Si vous n'avez pas de prises mises à la terre, faites-en installer par un électricien agréé. L'opérateur doit être correctement mis à la terre pour éviter les blessures corporelles et des dommages matériels. NE JAMAIS UTILISER DE RALLONGE! Vérifiez les codes locaux des bâtiments pour connexions câblées permanentes. Les connexions câblées permanentes doivent être effectuées par un électricien agréé qui se servira d'outils appropriés et respectera les consignes.

FOR GROUNDED OUTLET CONNECTION:
Plug in the power cord to standard 115 VAC outlet. Coil excess cord and tape or twist tie it to top of powerhead. (DO NOT PLACE DIRECTLY ABOVE LIGHT BULBS.)

ONCE POWER IS APPLIED:

- Verify that the RED and GREEN lights are lit on the Safe-T-Beam®. If they are not lit, return to step 5 and check wiring.
- Verify that the wired wall console is lit RED. If powerhead LED is blinking blue, press the Sure-Lock® button on the console. If the console is not lit RED, return to step 5 and check wiring.

CAUTION

DO NOT run opener until travel limits have been set to avoid damage to unit.

CAUTION

NE PAS faire fonctionner l'ouvre-porte au-delà des limites de parcours pour ne pas endommager l'unité.

8

REFER TO THE PROGRAMMING, OPERATION AND MAINTENANCE MANUAL FOR EXTRA PROGRAMMING AND ACCESSORY INSTALLATION INSTRUCTIONS.

BASIC OPENER PROGRAMMING

See owners manual for WARNINGS/CAUTIONS and detailed instructions pertaining to opener programming.

NOTE: MAKE SURE THE OPENER IS PLUGGED INTO A PROPERLY GROUNDED ELECTRICAL OUTLET.

Programming DOWN (-) Limit:

- Press and hold the DOWN (-) arrow button.
 - Long LED will light BLUE.
- Release DOWN (-) arrow button.
 - Long LED will flash BLUE.
- Press and hold the DOWN (-) arrow button until door is fully closed.
 - Use the UP (+) arrow button if door closes too far. Use both UP (+) and DOWN (-) buttons to adjust close travel as necessary.

Door should rest on the floor until the weather strip is compressed enough to seal along the width of the door. Damaged doors or uneven floors may not seal properly. Repair these conditions to achieve a proper seal. DO NOT compress seal so much that the door will bend or buckle.

- Press and release the SET/PRGM button
 - Both LEDs will flash BLUE, then go out. The DOWN limit is now programmed.

Programming UP Limit:

- Press and hold the UP (+) arrow button.
 - Long LED will light BLUE.
- Release UP (+) arrow button.
 - Round LED will flash BLUE.
- Press and hold the UP (+) arrow button until door is fully open.
 - Use the DOWN (-) arrow button if door opens too far. Use both UP (+) and DOWN (-) buttons to adjust open travel as necessary.
- Press and release the SET/PRGM button
 - Both LEDs will flash BLUE, then go out. The UP limit is now programmed.

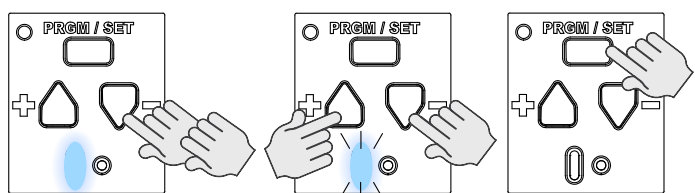
Programming Force:

- Operate the opener with the wall control or remote control, full open to full close. Force is set when the unit completes a full cycle, i.e., running it with the wall console, ideally prior to programming wireless devices. See information in the manual if the door will not run full open or close.

Programming Contact Safety:

- Place a 2x4 under the door opening.
- Run opener to full close (Door should reverse upon contact with 2x4). If door fails to fully open upon contact with 2x4, see information in the manual for corrective action.

DOWN LIMIT



UP LIMIT

