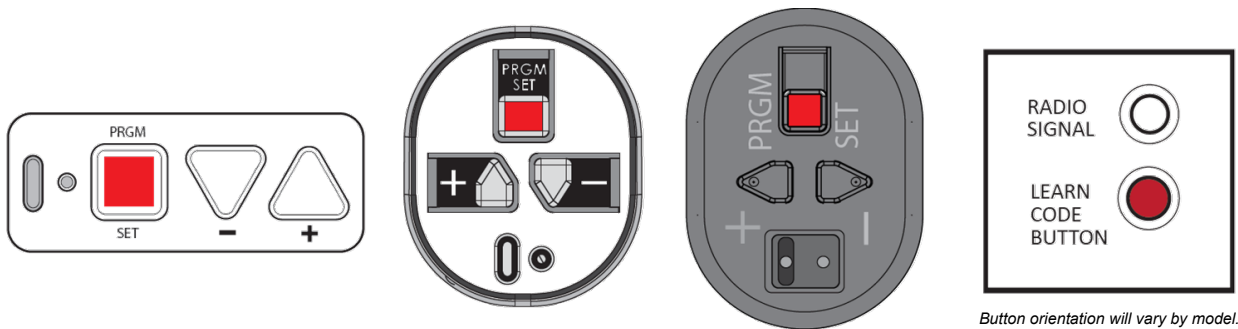


## **Programming Remotes**

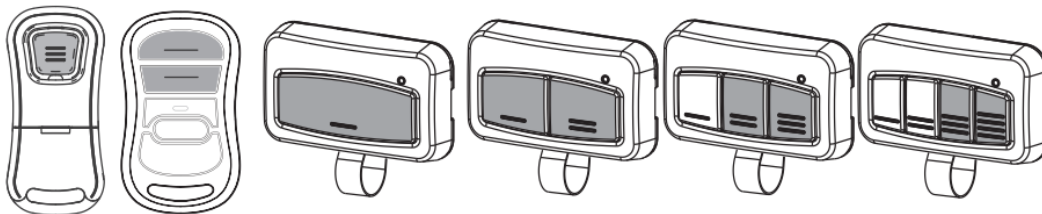
**This programming sequence will work for current and older-style remotes.**

1. Remove the battery pull tab to activate the remote. If reprogramming an older or existing remote, the battery tab will already be removed.
2. Locate either a square PROGRAM/SET button (PRGM) or round LEARN CODE button on the opener (ceiling). The location could be anywhere on the cover or under a lens depending on the model.



3. Put opener into programming mode - the openers programming window will time out after 30 seconds:
  - If you have a PRGM/SET button - press and hold down until the LED turns blue, then release. The purple LED will then begin flashing.
  - If you have a LEARN CODE button – press and hold down until the red LED starts flashing, then release.
4. Holding the remote at least 5ft away from the opener, press and release the desired remote button once every 2 seconds until the opener operates.

***NOTE: Have an opener from 1995-1997? Perform the same steps as noted above using these shaded buttons only.***

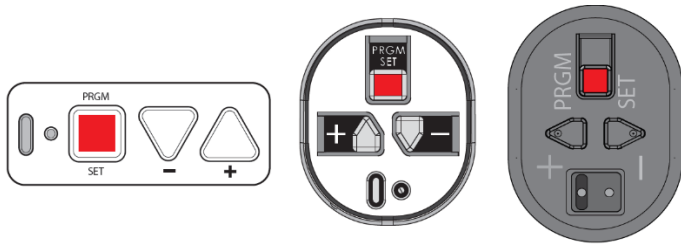


## Clearing Wireless Devices from the Opener Head

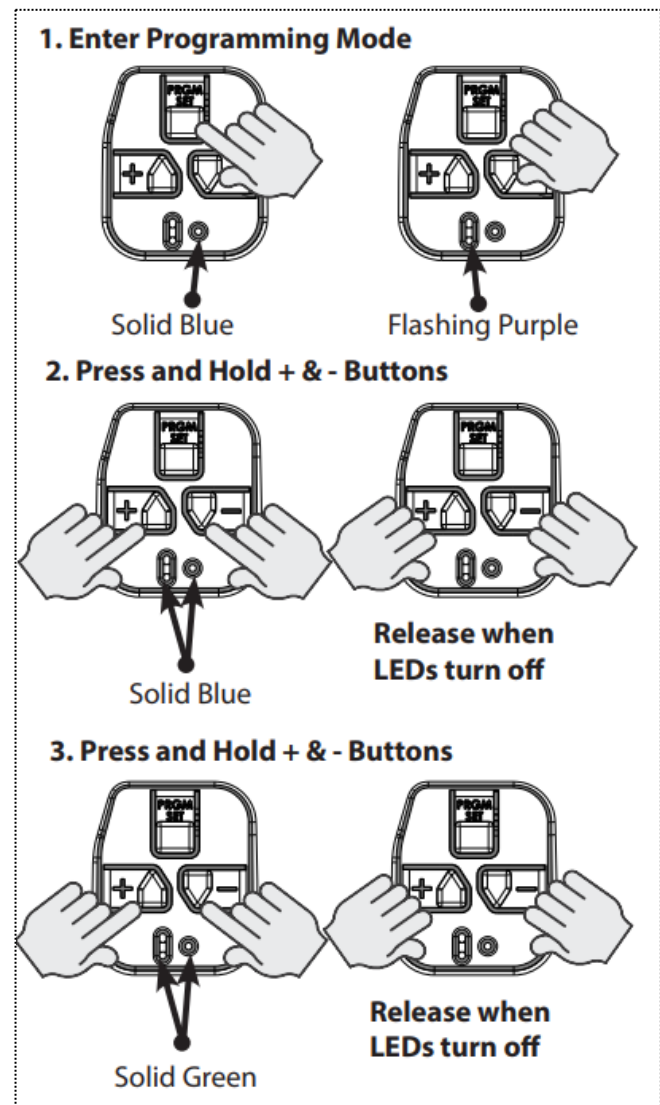
**NOTE:** Clearing memory in this way from the powerhead will clear ALL programmed remotes, wireless keypads, and vehicle transmitters (wireless devices). The opener will no longer recognize any signal from any of these devices, including a missing remote device. This does not include recognition of any activations through Wi-Fi (app based functions will remain unaffected). All remaining (or recovered) remotes, vehicles and wireless keypads **MUST** be reprogrammed.

**NOTE:** The garage door opener will operate normally using the wired wall console, if applicable.

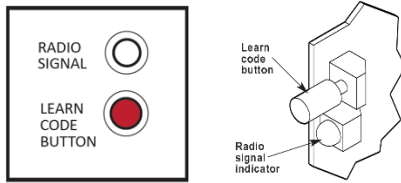
For openers with these types of button pads:



1. Press and hold the SET/PRGM button until the ROUND LED turns BLUE, then release. The LONG LED will then flash PURPLE.
2. To clear all RF devices, except the Wireless Wall Console, when used (transmitters/keypads/HomeLink/Car2U):
  - Press and hold both the UP & DOWN buttons at the same time until both LEDs turn BLUE.
  - Release to erase RF devices.
3. And/or, to clear ONLY the Wireless Wall Console:
  - While in programming mode, press and hold both the UP and DOWN buttons at the same time until both LEDs turn GREEN.
  - Release to erase the Wireless Wall Console
4. Press any remote (or keypad, wireless console) button – the opener should not run.



For older openers with this type of button pad:



*Button orientation will vary by model.*

1. Press and hold down the LEARN CODE button (LED lights) for approximately 10 seconds OR until the LED goes out, then release.
2. Press any remote (or wireless console) button – the opener should not run.

All wireless devices have been cleared from the opener head.